

# SENSOR DE DETECCIÓN DE FUGAS DE AGUA PARA SMART PDU - FICHA TÉCNICA

*Publicado en 01-06-2026 por barpaadminuser*

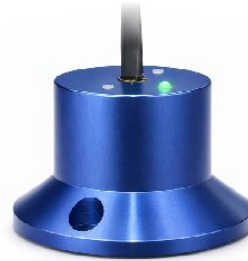


# barpa

## SMART PDU WATER LEAKAGE SENSOR

### DESCRIPTION

High-sensitivity water leakage detection sensor purpose-built for IT and data center infrastructures, providing continuous real-time leak monitoring and centralized alarm management when integrated with barpa Smart PDUs.



### KEY FEATURES

Real-time water leakage detection
Automatic detection by the Smart PDU upon sensor connection
Suitable for continuous environmental monitoring in rack environments

### MECHANICAL & PHYSICAL SPECIFICATIONS

Dimension (mm)	Ø59x32
Weight (kg)	0,118
Applicable Environments	Indoor
Cable Length (m)	1,5 / 1,8
Power Supply (V)	12
Connection Type	RJ11
Sensor Port Type	RJ11

### MONITORING & METERING

Leak Presence Status Reporting	Yes
Spot Leak Detection	No
Multiple Leak Point Detection	No
Web Interface	Yes
Central Monitoring Software	Yes

This document is authored and owned by barpa. It is forbidden to reproduce in whole or in part without mentioning its authorship, as well as modification of its content or context. All specifications are subject to change without notice. The pictures/drawings are merely illustrative.  
More information: [info@barpa.eu](mailto:info@barpa.eu) or in [www.barpa.eu](http://www.barpa.eu)  
datasheet n° b215\_0 | date: 02/26  
approved by: Ana Barbosa

